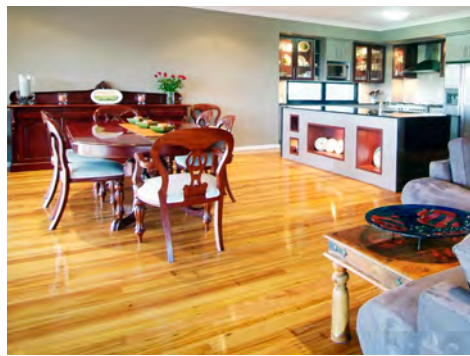


# AUSTRALIAN WORMY CHESTNUT

*Eucalyptus Obliqua, Eucalyptus Sieberi, Eucalyptus Fastigata*



www.brittontimbers.com.au



## Description

Trees are affected by wildfires, years of drought and attack by insects.

Flood and strong winds stunt their growth with each piece showing nature's signature.

Deep red gum veins formed by fire, ambrosia beetle marks, pin holes and squiggly worm marks are all evident.

*Also known as Southern Blackbutt, Chestnut.*

## Suitability

- ✗ Boating
- ✓ Cabinet Door
- ✗ Decking & Cladding
- ✓ Flooring & Staircase
- ✓ Furniture
- ✓ Joinery

## TECHNICAL INFORMATION

Density (kg/m <sup>3</sup> dry)	800	Hardness (Janka) (kN)	8	Resistance to Split in Nailing	Good
Specific Gravity	0.8	Finish	Good	Resistance to Split in Screwing	Good
Modulus of Rupture (MPa dry)	118	Stability	Good	Gluing	Good
Modulus of Elasticity (GPa dry)	15	Durable	Yes	Growing Region	VIC
Radial Shrinkage %	3.5	Sapwood Lyctid Susceptible	No	Availability	Available
Tangential Shrinkage %	6	Machining	Good		

### New South Wales

116-118 Jemma Rd  
Prestons NSW 2170

☎ 02 8783 9900

### Victoria

25 Gaine Rd  
Dandenong VIC 3175

☎ 03 8769 7111

### Queensland

29 Sodium St  
Narangba QLD 4504

☎ 07 3888 3351

### Tasmania

3 Brittons Rd  
Smithton TAS 7330

☎ 03 6452 2522



PEFC™  
PEFC/21-31-233