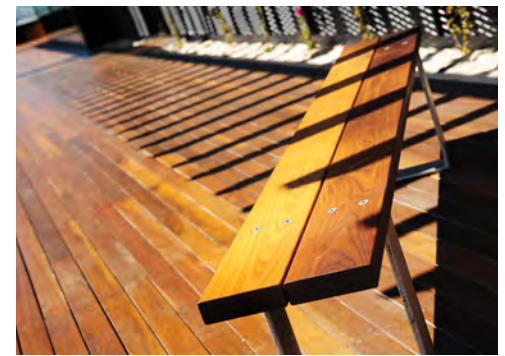
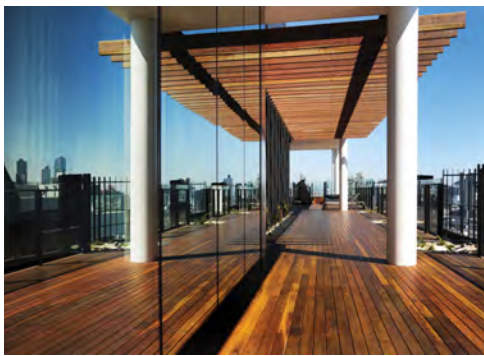


SPOTTED GUM

Corymbia Maculata, Corymbia Citroedora, Eucalyptus Henryi



www.brittontimbers.com.au



Description

Heartwood pale to dark brown or chocolate. Sapwood is distinctively paler but there may be a zone of intermediate wood.

Texture moderately coarse. Grain variable, the frequent presence of wavy grain produces an attractive fiddleback figure.

Slightly greasy nature. Gum veins common. Northern material is usually slightly denser, stronger and more durable than southern.

Also known as Lemon Scented Gum.

Suitability

- ✓ Boating
- ✓ Cabinet Door
- ✓ Decking & Cladding
- ✓ Flooring & Staircase
- ✓ Furniture
- ✓ Joinery

TECHNICAL INFORMATION

Density (kg/m ³ dry)	950	Hardness (Janka) (kN)	11	Resistance to Split in Nailing	Good
Specific Gravity	0.95	Finish	Good	Resistance to Split in Screwing	Good
Modulus of Rupture (MPa dry)	150	Stability	Fair	Gluing	Poor
Modulus of Elasticity (GPa dry)	23	Durable	Yes	Growing Region	NSW & QLD
Radial Shrinkage %	4.5	Sapwood Lyctid Susceptible	Yes	Availability	Available
Tangential Shrinkage %	6	Machining	Good		

New South Wales

116-118 Jemma Rd
Prestons NSW 2170

☎ 02 8783 9900

Victoria

25 Gaine Rd
Dandenong VIC 3175

☎ 03 8769 7111

Queensland

29 Sodium St
Narangba QLD 4504

☎ 07 3888 3351

Tasmania

3 Brittons Rd
Smithton TAS 7330

☎ 03 6452 2522



PEFC/21-31-233



AFS/01-31-233