

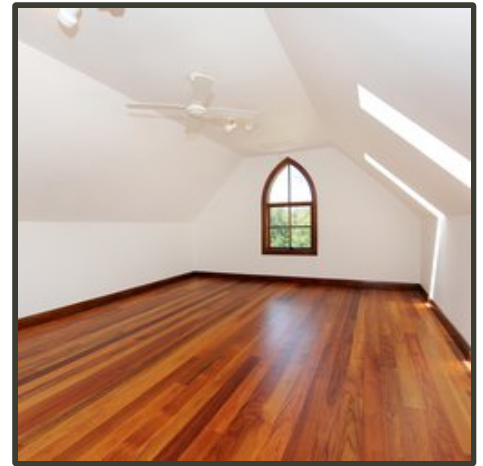
# Tasmanian Blackwood

Acacia Melanoxydon

Heartwood golden brown, often with narrow bands of darker colour indicative of the growth rings. Sometimes reddish streaks are also present. Grain usually straight but sometimes wavy, producing a fiddleback figure. Also known as Blackwood, Black Wattle.

## Application Suitability

Furniture • Cabinetry • Flooring • Joinery • Boating



Density	665
Specific Gravity	0.66
Modulus of Rupture (Mpa Dry)	99
Modulus of Elasticity (Gpa Dry)	13
Radial Shrinkage	1.5%
Tangential Shrinkage	4%

Hardness (janka) (kN)	6.0
Finish	Good
Gluing	Good
Machining	Good
Sapwood Lyctid susceptible	Yes

Stability	Excellent
Durability	Non Durable
Screwing Split Resistance	Good
Nailing Split Resistance	Good
Growing region	Tasmania
Availability	Widely

BT Tasmania  
(03) 6452 2522  
3 Brittons Road  
Smithton, TAS 7330

BT New South Wales  
(02) 8783 9900  
116-118 Jemma Road  
Prestons, NSW 2170

BT Queensland  
(07) 3888 3351  
100 Potassium Street  
Narangba, QLD 4504

BT Victoria  
(03) 8769 7111  
25 Gaine Road  
Dandenong, VIC

BT International  
+61 2 8783 9900  
116-118 Jemma Road  
Prestons, NSW 2170

BT Veneer Products  
(03) 6435 1108  
2 Elizabeth St  
Somerset TAS 7322



[brittontimbers.com.au](http://brittontimbers.com.au)

