

## Born in Tasmania. Bred for the World.

Tasmania has been producing quality timbers for two centuries. Tasmanian Blackwood, Oak, and Myrtle from Australia's southern-most forests are providing designers, architects and craftsmen with exciting new options for flooring and fine cabinetry.

Tasmania, the island State of Australia, lays at the very edge of the great southern ocean and is the embarkation point for Antarctica.

The timbers that grow in this cool climate are highly prized; hence the exacting levels of conservation protection by world standards. These stunning timbers are exported under strict environmental controls and compliance with international regulatory systems.

Through *Britton Timbers International*, these iconic species are now available to the world.



## Britton Timbers International

**Delivering Wood to the World** – from the lush Tasmanian forests to the Middle East, China, Europe and beyond, Britton Timbers International (BTI) has been structured to ensure the timely delivery of timbers guaranteed to put the stamp of creativity and individuality into design projects and major developments.

As well as Tasmanian Blackwood, Oak and Myrtle, BTI imports and exports more than fifty special species timbers. BTI partners with architects, and building and design professionals to enhance projects across the spectrum - from residential to large-scale commercial fit-outs.

Following a major expansion in its warehousing and distribution facilities in Australia, with centres in Melbourne, Sydney and Brisbane, BTI is perfectly placed to meet the increasing world-wide demand for its timbers. Whether they are Tasmanian timbers processed at its state-of-the-art mill at Smithton or specialty American and European species, BTI offers a complete supply solution.

Contact Dominic McNeil at Britton Timbers International for all of your import and export enquiries:

E [dominic@brittontimbers.com.au](mailto:dominic@brittontimbers.com.au)  
T +61 2 8783 9900 F +61 2 8783 9800  
M +61 438 878 307

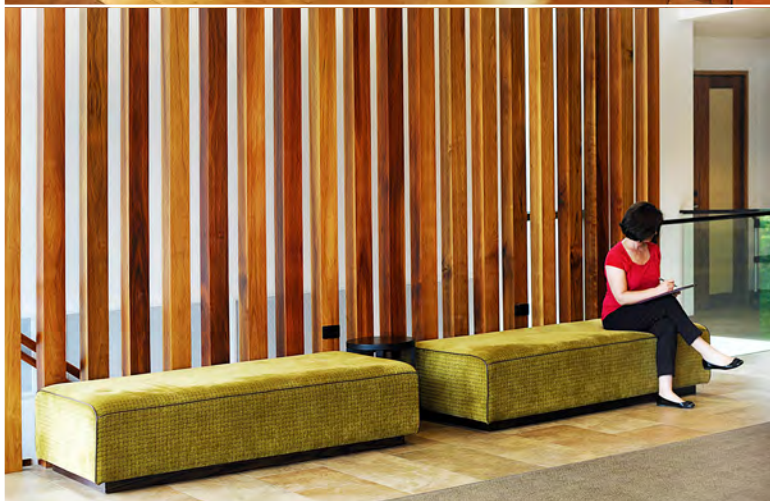
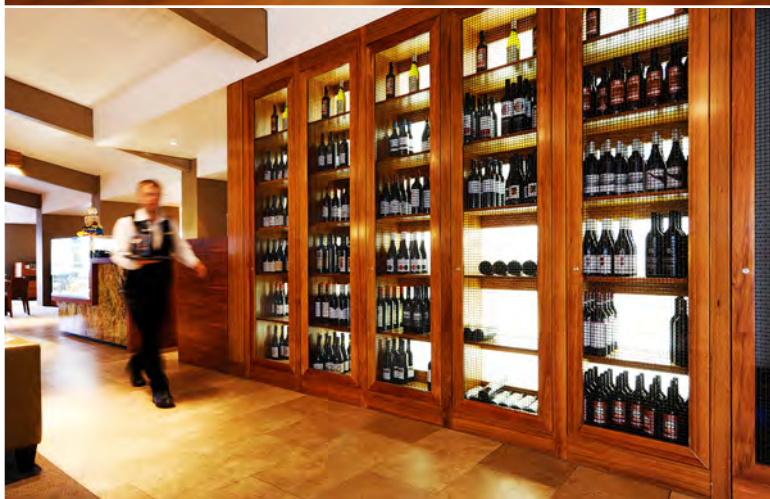
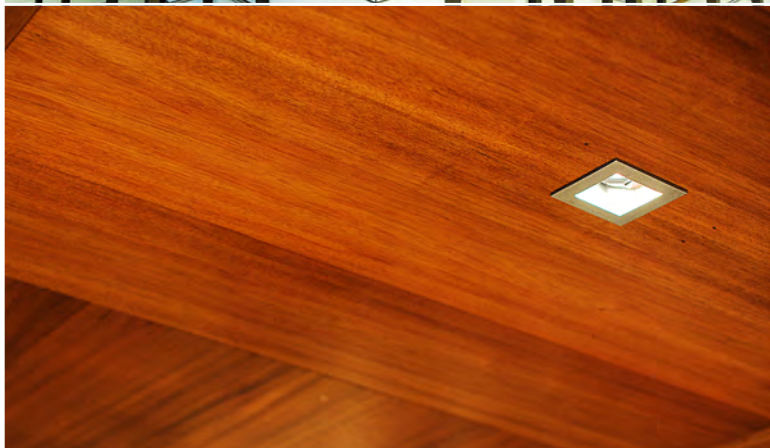
## Environmental Responsibility

**Tasmania's timber supply is highly regulated** – stringent environmental standards must be observed – that's the way it works in Tasmania.

Because we take our environmental responsibilities seriously, Britton's Tasmanian Blackwood, Oak, Myrtle and range of imported timbers are increasingly featured in major building and design projects.

We source all of our Tasmanian timber from the sustainably managed and PEFC certified temperate forests of the north-west region of the state.

Sustainability is also achieved through compliance with the provisions of the Forest Practices Code and the Tasmanian Regional Forest Agreement.



# TASMANIAN BLACKWOOD

## *Acacia Melanoxylon*

Blackwood grows throughout Tasmania's native forests from sea level to about one thousand metres, but it is in the state's temperate north-west that it thrives.

Blackwood lies at the heart of Britton Timbers Tasmanian operation and it is from here that the generally light, golden-brown timber begins its journey to world markets via Britton's international distribution network.

Blackwood is a fine timber for bespoke projects where highlights and a 'designer' feel is called-for. The timber can exhibit a reddish tint and occasional black streaks which add to its individuality.

It is available defect-free in all thicknesses and widths plus the matching veneer, which makes it an ideal timber for commercial furniture and joinery fit-outs.

The grain of the wood also has designers excited. Whether it's used for flooring, high-quality furniture or modern large-scale commercial fit outs, Blackwood's distinctive and sometimes wavy grain provides a welcome addition to the architect's and craftsman's design palette.



## TECHNICAL INFORMATION

Density (kg/m <sup>3</sup> dry)	665	Hardness (Janka) (kN)	6	Resistance to Split in Nailing	Good
Specific Gravity	0.66	Finish	Good	Resistance to Split in Screwing	Good
Modulus of Rupture (MPa dry)	99	Stability	Excellent	Gluing	Good
Modulus of Elasticity (GPa dry)	13	Durable	No	Growing Region	TAS
Radial Shrinkage %	1.5	Sapwood Lyctid Susceptible	Yes	Availability	Widely
Tangential Shrinkage %	4	Machining	Excellent		

# TASMANIAN OAK

## *Eucalyptus Obliqua*

This timber first caught the attention of European timber workers early in Tasmania's settlement, who named it after the timber they thought it most resembled, English Oak.

Tasmanian Oak is a warm, dense and resilient timber which is hard and very stable. It is perfect for flooring, furniture, paneling, veneers and glue-laminating.

It's a lightly coloured timber with variations from straw to reddish brown with intermediate shades of cream to pink. It holds stain particularly well which allows ready matching with other timbers, finishes or furnishings. The colour shades of Tasmanian Oak find favour with architects, builders and designers who are looking to inject a modern, crisp feel to their projects.

In Tasmania, eucalypts may live for four hundred years and attain a height of seventy metres; indeed, some have reached one hundred metres with a three to four metre girth.

Tasmanian oak is readily workable and attains a high-quality finish. It is a hard-wearing hardwood with high impact resistance which makes it particularly suitable where durability and strength are paramount.



## TECHNICAL INFORMATION

Density (kg/m <sup>3</sup> dry)	780	Hardness (Janka) (kN)	5.7 - 7	Resistance to Split in Nailing	Good
Specific Gravity	0.78	Finish	Good	Resistance to Split in Screwing	Good
Modulus of Rupture (MPa dry)	118	Stability	Good	Gluing	Good
Modulus of Elasticity (GPa dry)	15	Durable	No	Growing Region	TAS
Radial Shrinkage %	3.5	Sapwood Lyctid Susceptible	Yes	Availability	Widely
Tangential Shrinkage %	6.5	Machining	Good		

# TASMANIAN MYRTLE

## *Nothofagus Cunninghamii*

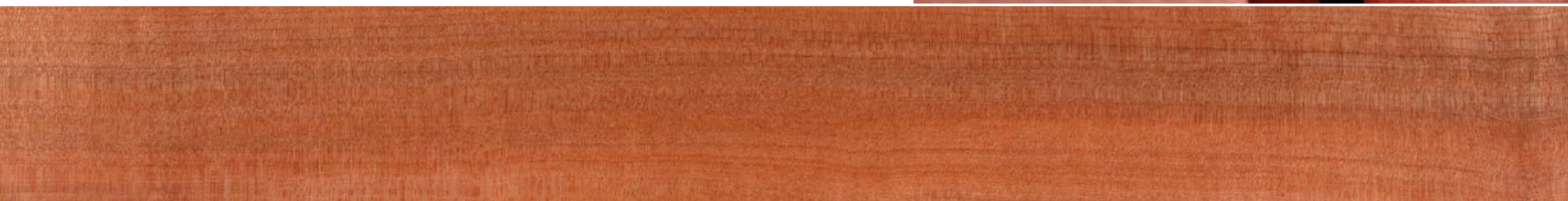
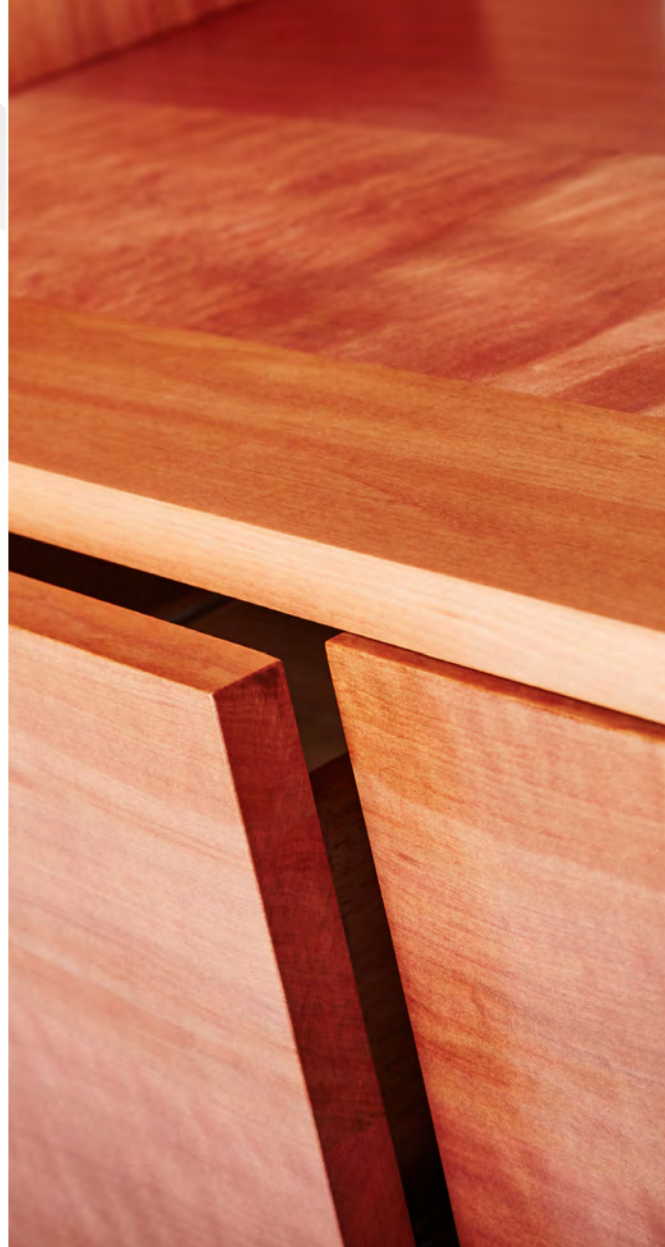
The distinctive pink and red tones of Tasmanian Myrtle have ensured it a special place in the furniture, boating and flooring arenas. It's hard, close grain enables it to be highly polished - a sought after quality for high-end furniture and cabinetry.

Popular for many years, Myrtle's vibrant tones with subtle variations have enhanced residential and commercial projects alike - from living rooms to boardrooms - both domestically and internationally.

Myrtle is very easily worked and can also be seen to great effect in wall panelling, architraves and veneers; Its versatility and hard-wearing qualities have made it a favourite among leading architects and designers.

Grown predominantly in Tasmania's fertile north-west, Britton Timber's Tasmanian Myrtle is sustainably harvested under PEFC certification guidelines.

It is machined to specification at Britton Timber's state-of-the-art Tasmanian Mill and distributed Australia-wide and internationally through sales outlets in Melbourne, Sydney and Brisbane.



## TECHNICAL INFORMATION

Density (kg/m <sup>3</sup> dry)	700	Hardness (Janka) (kN)	6	Resistance to Split in Nailing	Good
Specific Gravity	0.72	Finish	Good	Resistance to Split in Screwing	Good
Modulus of Rupture (MPa dry)	108	Stability	Good	Gluing	Good
Modulus of Elasticity (GPa dry)	14	Durable	No	Growing Region	TAS
Radial Shrinkage %	2.5	Sapwood Lyctid Susceptible	Yes	Availability	Limited
Tangential Shrinkage %	4.5	Machining	Good		



**BRITTON  
TIMBERS**  
INTERNATIONAL  
[www.brittontimbers.com.au](http://www.brittontimbers.com.au)

*Dominic McNeil*

+61 2 8783 9900

+61 438 878 307

[dominic@brittontimbers.com.au](mailto:dominic@brittontimbers.com.au)

