

# AUSTRALIAN CHESTNUT FLOORING

*Eucalyptus Obliqua, E.Sieberi and E.Fastigata*

*A blend of Australia's most durable and attractive eucalyptus species, the subtle colours and tonal variations of Australian Chestnut Flooring belie its durability and strength.*

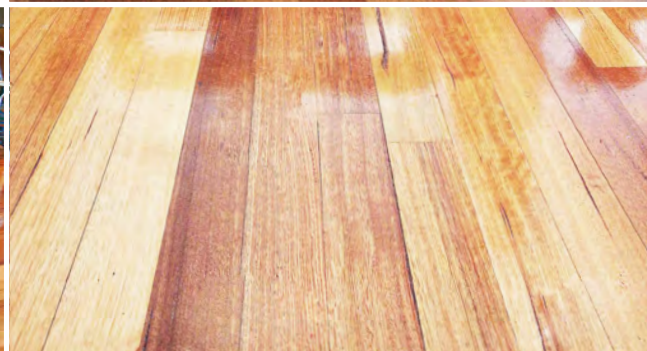
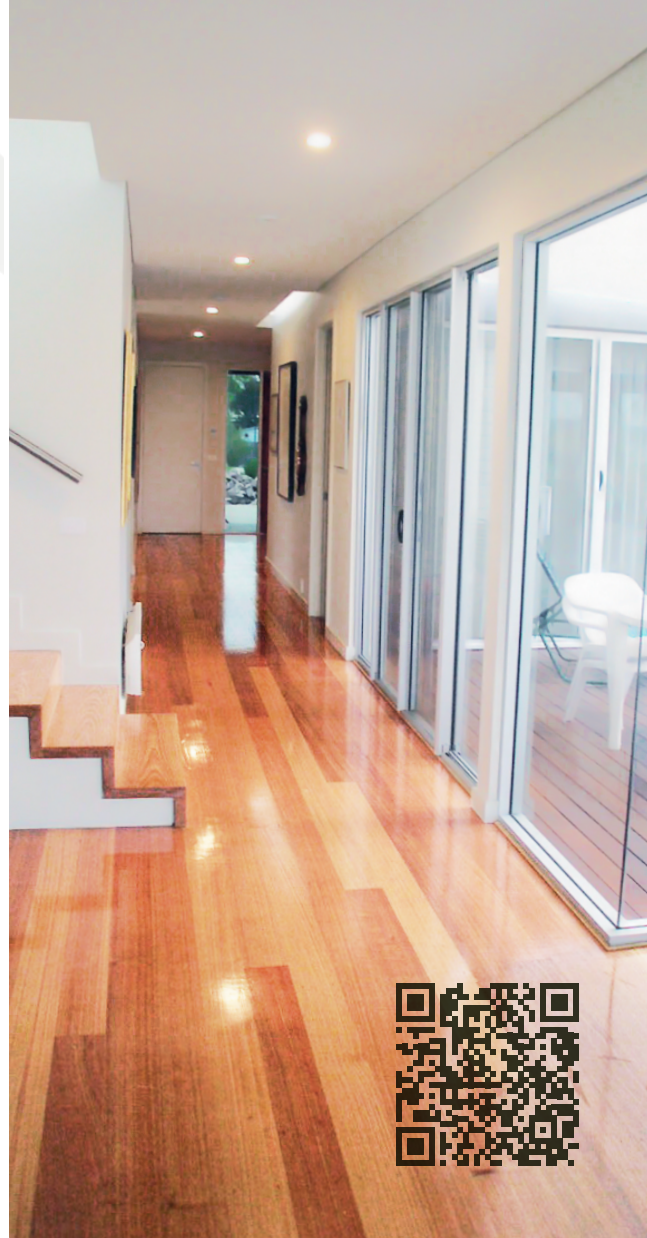
*Tough and hard with a distinctive colour palette, the natural beauty of Australian Chestnut Flooring is proving popular with architects and builders.*

*Australian Chestnut requires very little maintenance beyond the initial coating and will stand the test of time in a variety of situations.*

*Britton Timbers carries stocks of Australian Chestnut Flooring at our Melbourne, Sydney and Brisbane outlets; and can arrange prompt supply to overseas destinations through Britton Timbers International.*

**Sizes:** 19 x 85 Tongue and Grooved Secret Nailed End Matched  
 19 x 130 Tongue and Grooved End Matched  
 14 x 85 Tongue and Grooved Overlay  
 14 x 130 Tongue and Grooved Overlay

*Britton Timbers can supply matching stair componentry and stair treads.*



## TECHNICAL INFORMATION

Density (kg/m <sup>3</sup> dry)	800	Tangential Shrinkage %	6	Machining	Good
Specific Gravity	0.8	Hardness (Janka) (kN)	8	Resistance to Split in Nailing	Good
Modulus of Rupture (MPa dry)	118	Finish	Good	Resistance to Split in Screwing	Good
Modulus of Elasticity (GPa dry)	15	Stability	Good	Gluing	Good
Radial Shrinkage %	3.5	Sapwood Lyctid Susceptible	No	Growing Region	VIC
				Availability	Widely